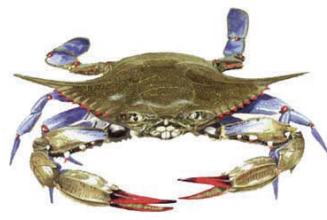
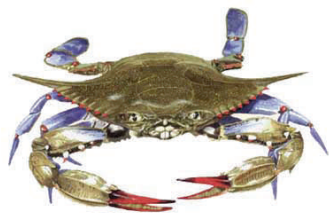
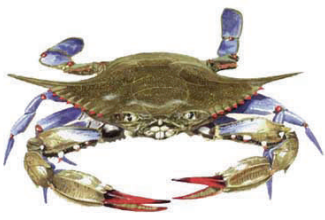


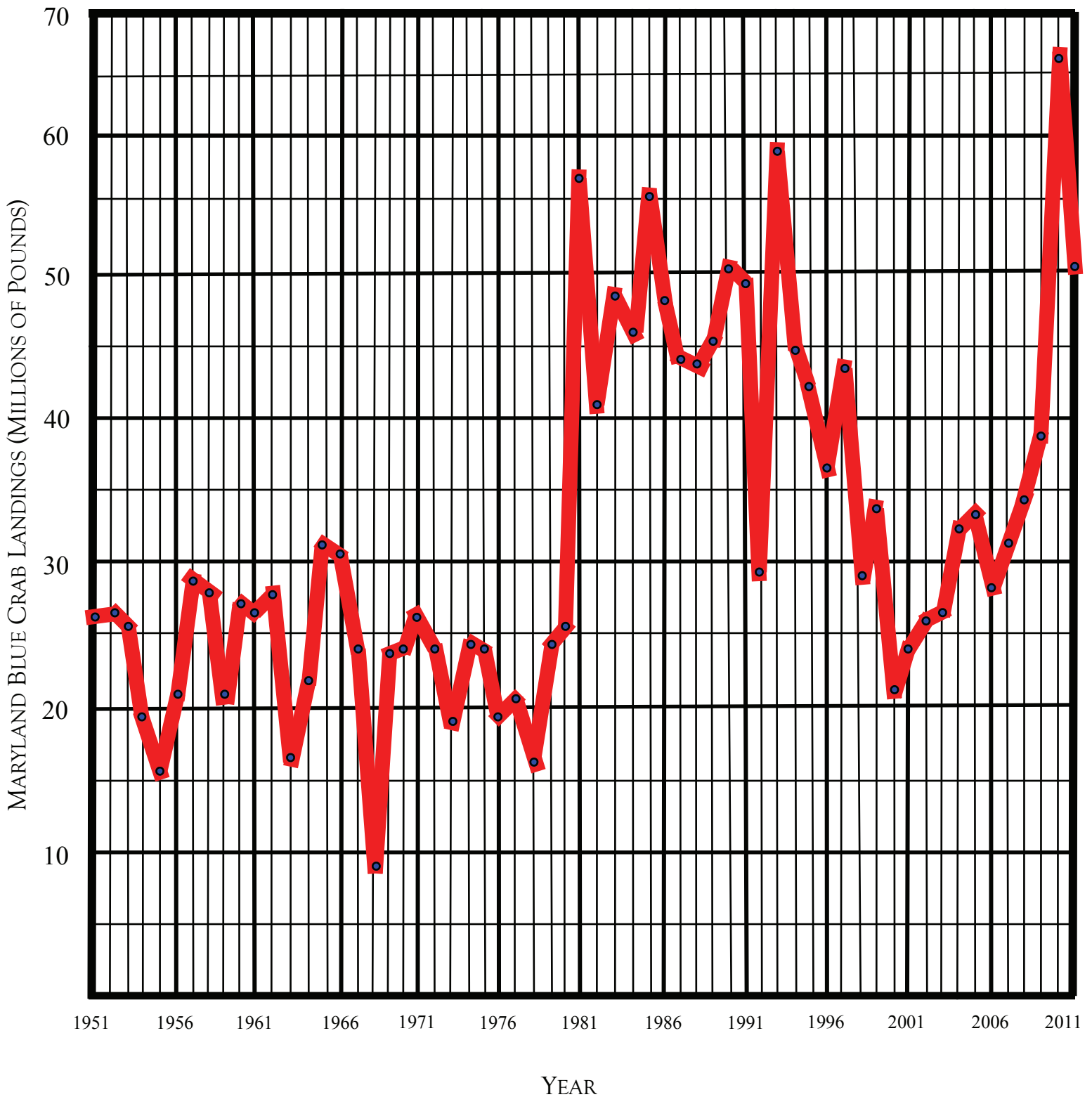
## DATA

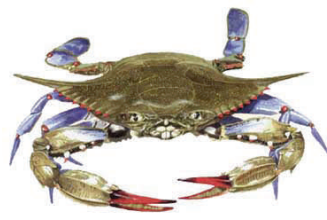
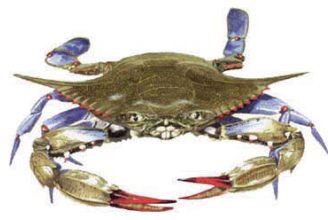
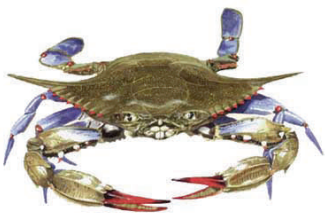
### MARYLAND COMMERCIAL BLUE CRAB LANDINGS 1951 - 2011

<b>1951</b>	27,146,400	<b>1982</b>	41,215,200
<b>1952</b>	27,499,200	<b>1983</b>	48,610,000
<b>1953</b>	26,367,900	<b>1984</b>	46,801,800
<b>1954</b>	19,073,400	<b>1985</b>	55,476,400
<b>1955</b>	15,231,500	<b>1986</b>	48,107,900
<b>1956</b>	21,207,800	<b>1987</b>	44,231,800
<b>1957</b>	28,369,000	<b>1988</b>	44,206,900
<b>1958</b>	27,095,400	<b>1989</b>	45,412,100
<b>1959</b>	21,187,100	<b>1990</b>	50,786,161
<b>1960</b>	27,068,000	<b>1991</b>	49,756,236
<b>1961</b>	26,658,300	<b>1992</b>	29,174,069
<b>1962</b>	27,661,100	<b>1993</b>	59,763,788
<b>1963</b>	16,933,900	<b>1994</b>	44,937,722
<b>1964</b>	22,540,200	<b>1995</b>	42,523,992
<b>1965</b>	31,998,000	<b>1996</b>	37,174,668
<b>1966</b>	30,372,800	<b>1997</b>	43,978,676
<b>1967</b>	24,587,900	<b>1998</b>	29,546,458
<b>1968</b>	9,345,000	<b>1999</b>	33,820,654
<b>1969</b>	23,013,900	<b>2000</b>	21,419,470
<b>1970</b>	24,935,400	<b>2001</b>	24,222,045
<b>1971</b>	26,075,000	<b>2002</b>	25,237,841
<b>1972</b>	23,481,700	<b>2003</b>	26,220,305
<b>1973</b>	19,538,600	<b>2004</b>	32,378,861
<b>1974</b>	24,660,300	<b>2005</b>	33,650,524
<b>1975</b>	24,264,000	<b>2006</b>	28,291,703
<b>1976</b>	19,429,500	<b>2007</b>	30,777,750
<b>1977</b>	20,159,300	<b>2008</b>	34,871,758
<b>1978</b>	16,590,000	<b>2009</b>	38,800,803
<b>1979</b>	24,834,700	<b>2010</b>	66,611,021
<b>1980</b>	25,304,000	<b>2011</b>	50,019,015
<b>1981</b>	57,356,900		



# MARYLAND COMMERCIAL BLUE CRAB LANDINGS 1951 - 2011





# MARYLAND COMMERCIAL BLUE CRAB LANDINGS 1951 - 2011

